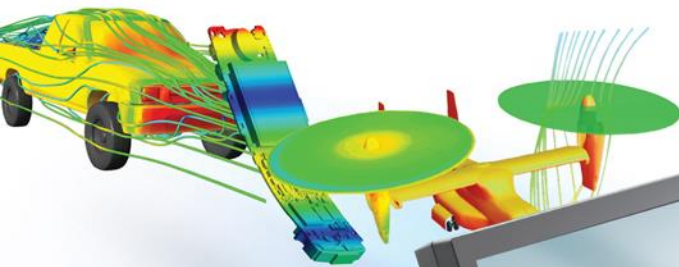


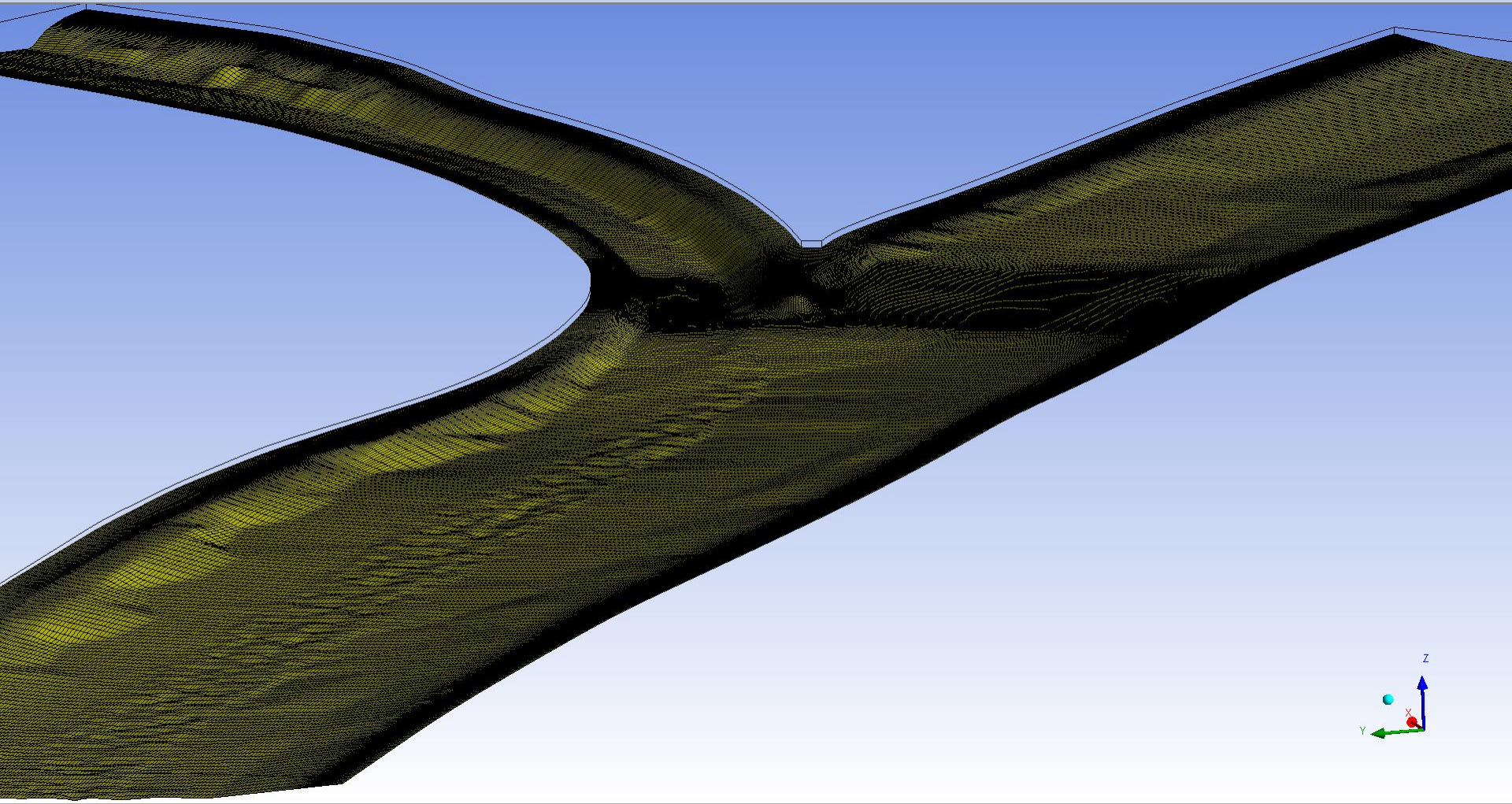


Assessment of proposed solution for flow redistribution at Sulina branch entrance

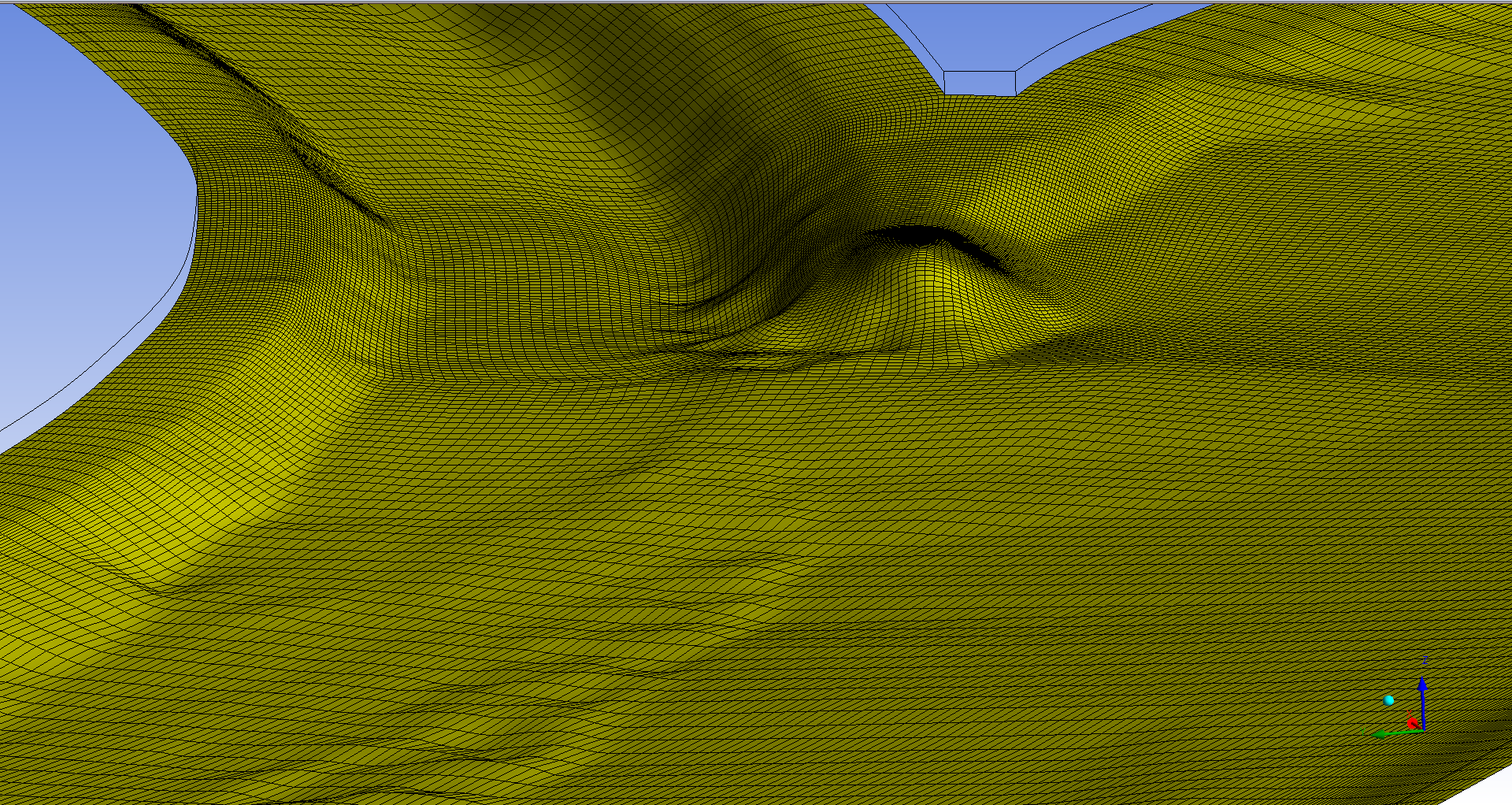


Dr.Ing. Răzvan MAHU
Prof.Dr.Ing. Florin POPESCU
Prof.dr.ing. Ion Ion

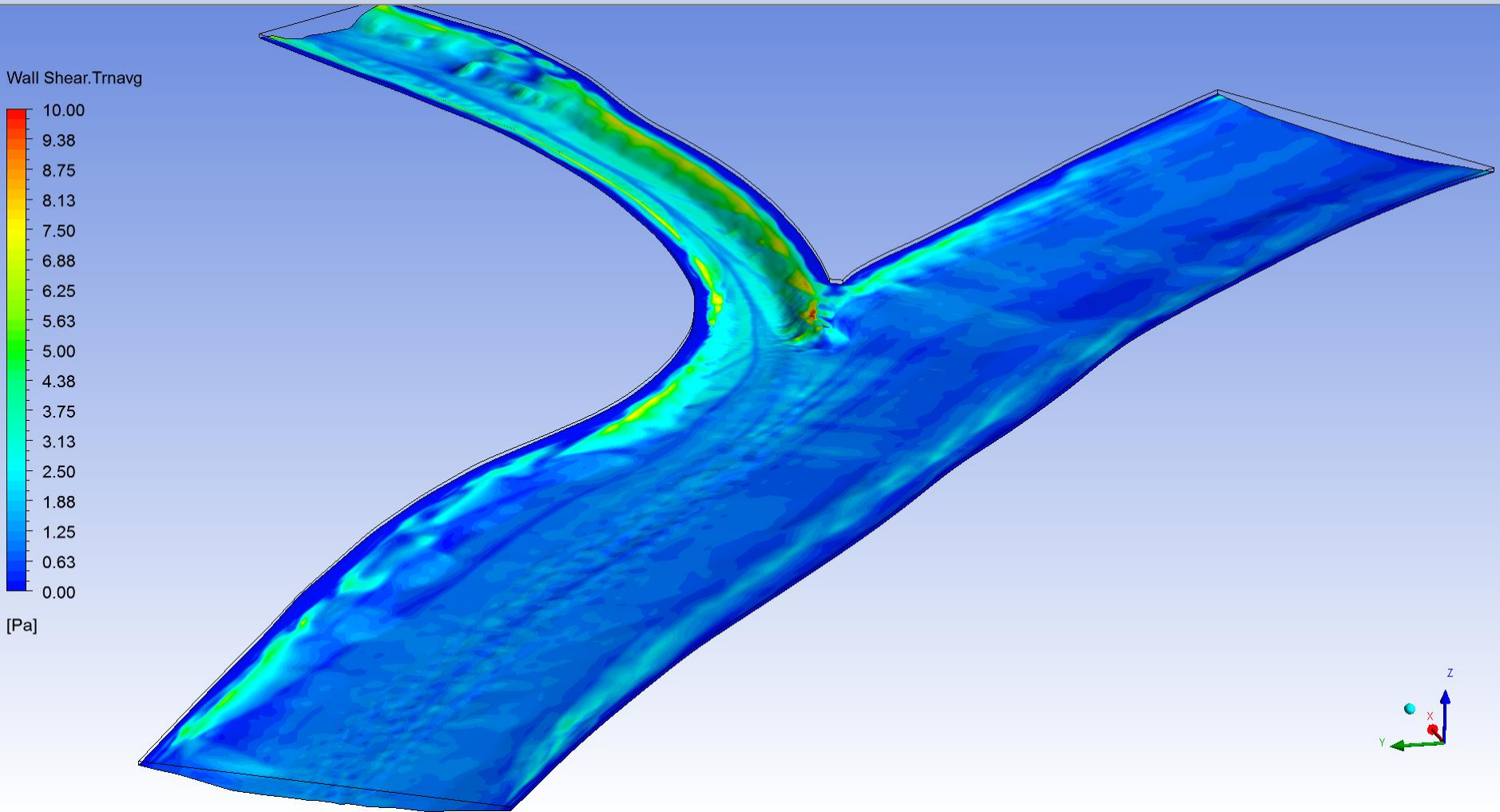
Current status - mesh



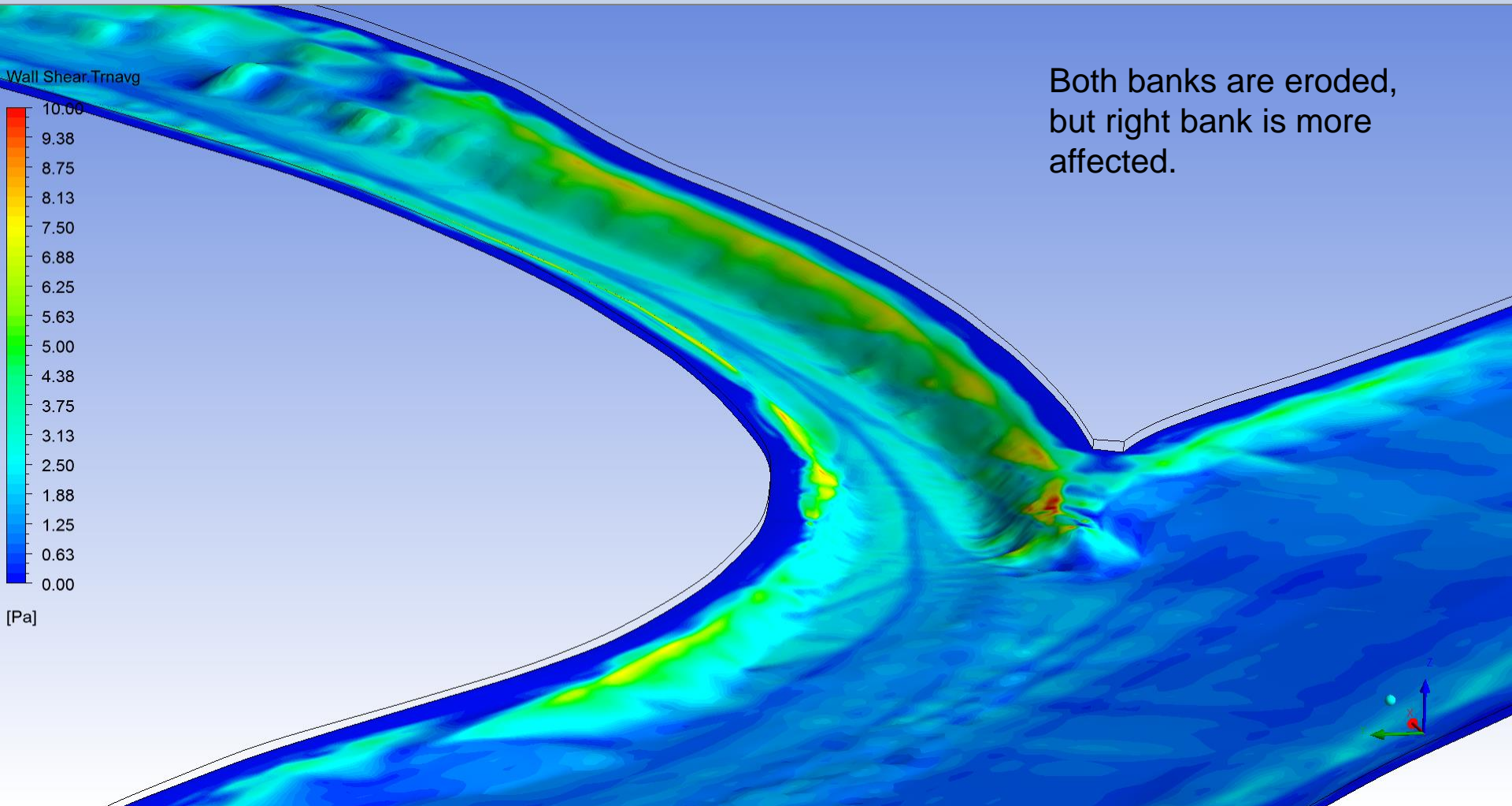
Current status - mesh detail



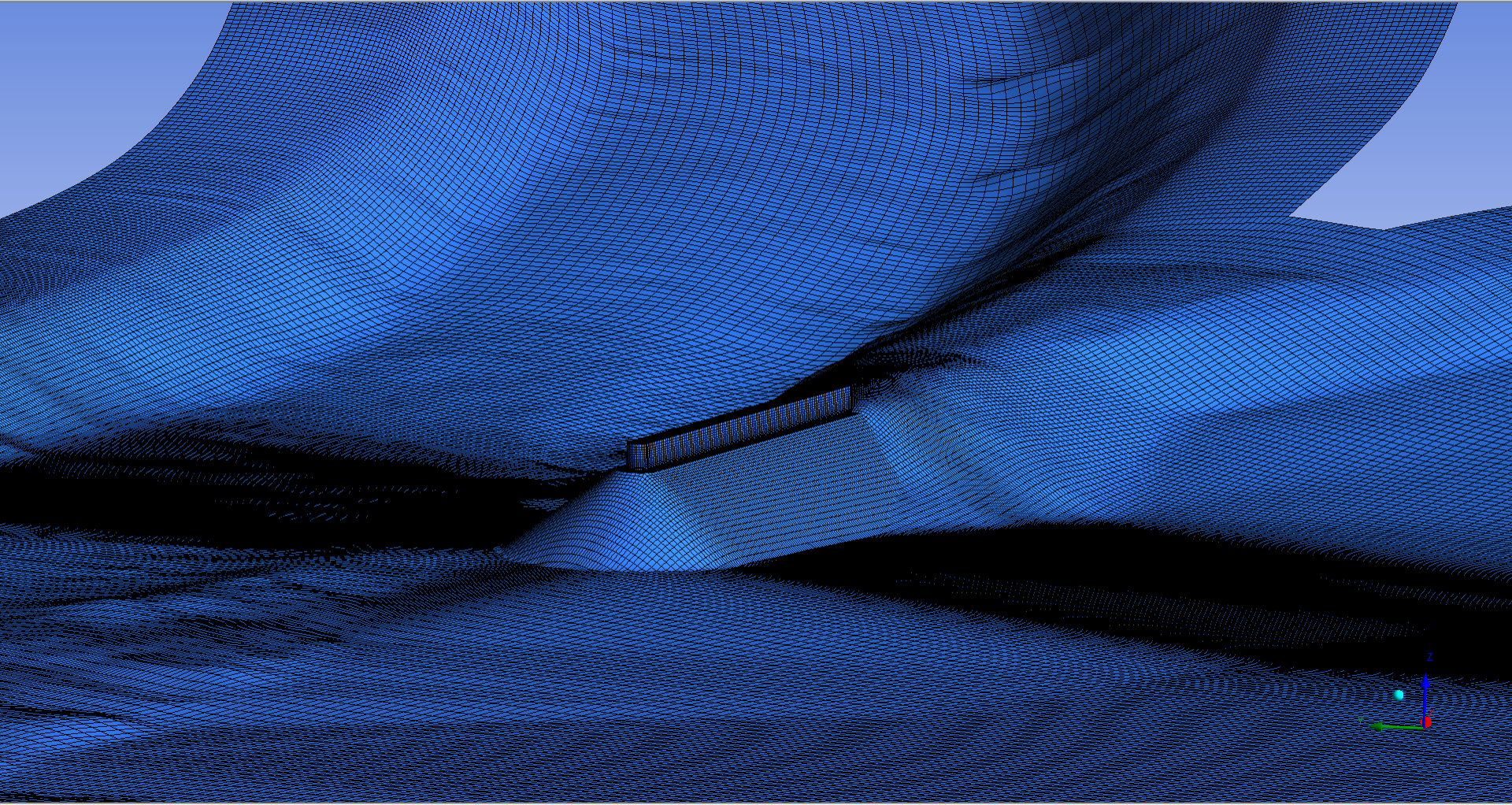
Current status – bottom shear stress



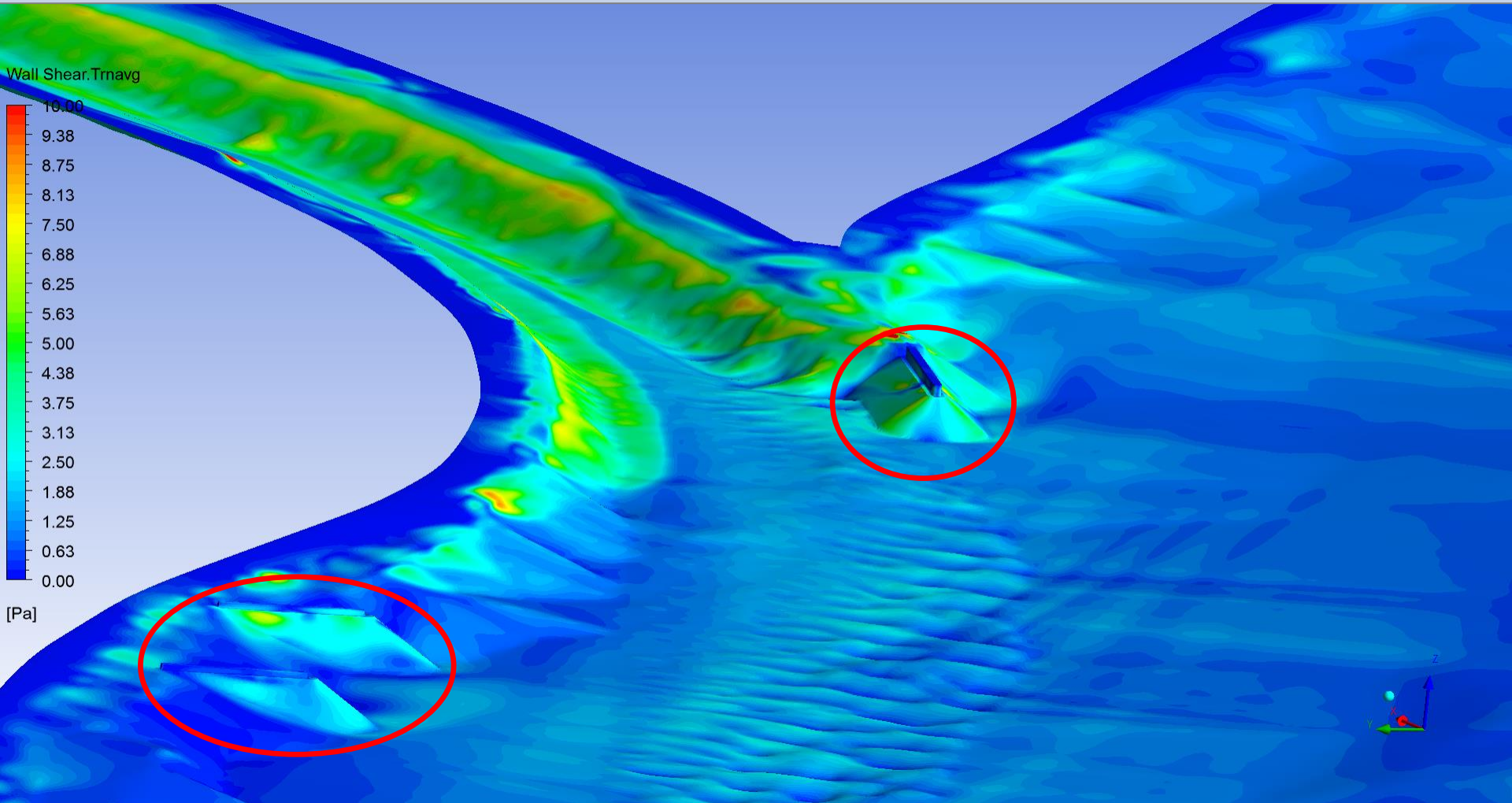
Current status – bottom shear stress, closer view



Proposed modifications - mesh detail highlighting the main structure



Proposed modifications - bottom shear stresses



Proposed modifications – bottom shear stresses, closer view

